



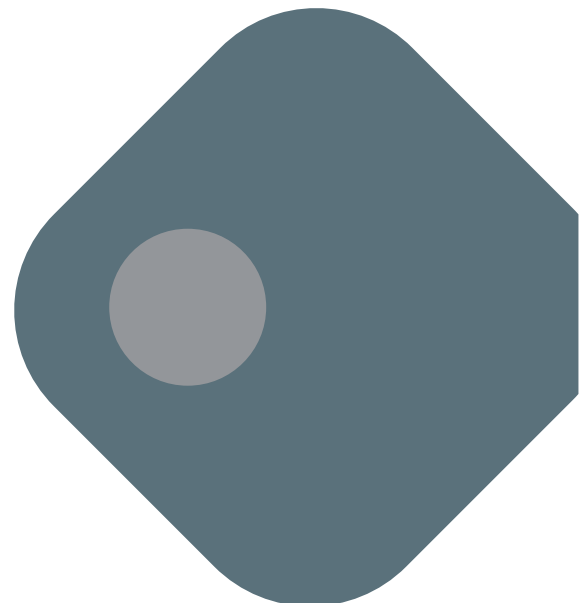
# TOUCH SCREEN HYDRONIC THERMOSTAT

V4 USER MANUAL



YOUR DIESEL HEATER  
SPECIALISTS

We sell, install and service  
diesel appliances for caravans,  
RVs, boats and off grid.





## General

The Dieselheat Touch Screen Thermostat is designed to control the room temperature and hydronic furnace in a Dieselheat hydronic hot water and heating system.

### Turning The System ON/Off

- Press to activate the system.
- Press to turn on the furnace for hot water.
- Press to activate the air heating.
- Press to switch the system off.

Furnace and fan settings are retained when the system is turned off and will return when it is switched on again.

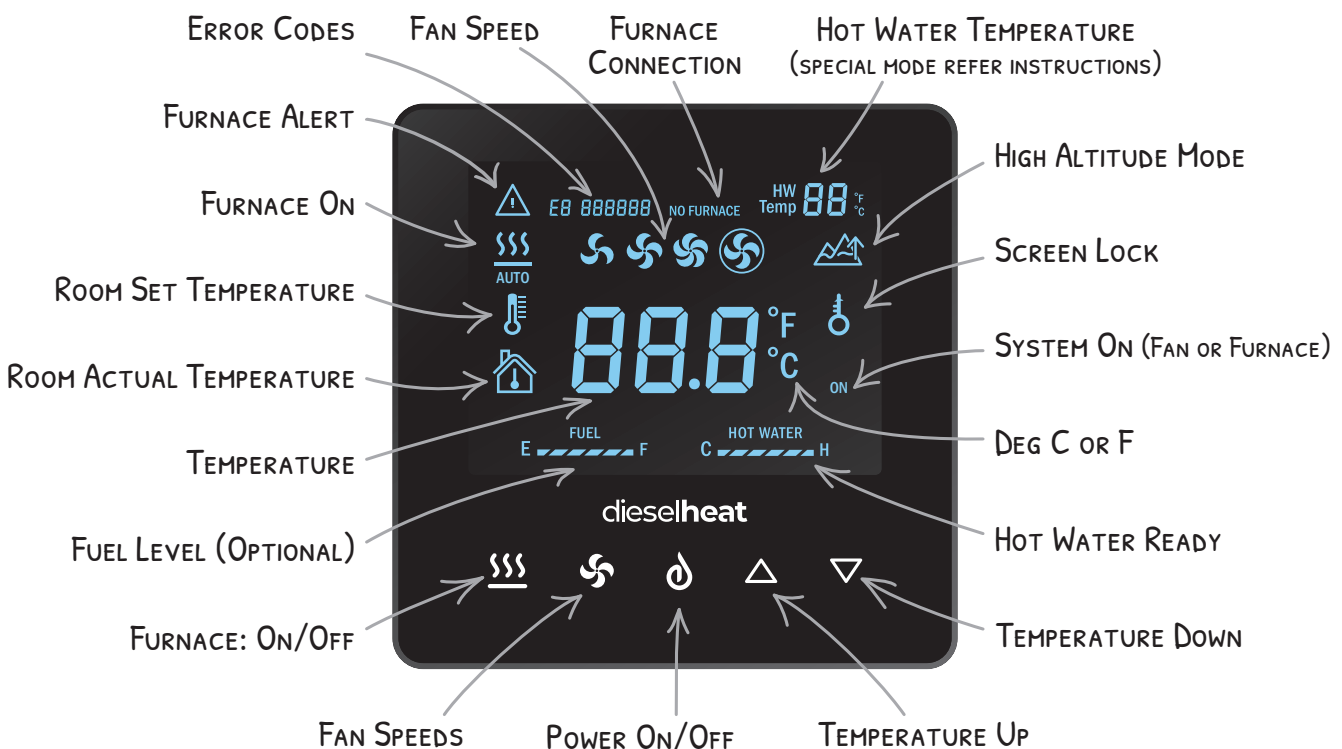
### Controlling Air Heating

- The furnace must be on for the air heating to work.
- Use the fan in low, medium, or high to set the fan speed manually.
- Use the fan in for the fan speed to vary automatically to maintain a set temperature.
- Use and to set the desired room temperature.

#### Note:

To prevent cold air blowing, the fan will not start until the coolant has warmed up. To use air heating, turn on the furnace and fan – the fan will start automatically once the system is warm. To test the fan, turn it on with the furnace turned off.

## Display Icons & Buttons



## Keypad Lock/Unlock

Push and hold  and  simultaneously for 5 seconds to LOCK all buttons.

Push and hold  and  simultaneously for 5 seconds to UNLOCK all buttons.



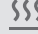
## Screen Sleep

The screen will go blank approximately 15 seconds after the last button press.

To wake it up, press any button. If the furnace or air heating fan is running, "ON" will remain visible on the screen.

## High Altitude Mode

If operating above 1,500m, the system must be set to High Altitude Mode:

- Press and hold  for 8 seconds until  appears on the screen.
- This setting is retained even when the system is turned off.
- To disable High Altitude Mode, press and hold  again for 8 seconds.

**DO NOT USE HIGH ALTITUDE MODE UNLESS OPERATING AT ALTITUDE**

## Fuel Level Indicator (Optional)

The fuel level gauge will show automatically after the Dieselheat fuel level sensor is connected and the fuel level is filled to over 50%. To hide the fuel level gauge set parameter 13 to 0 (see last page).

## Hot Water Indicator

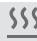

The hot water indicator only works if using the Eberspacher D5E furnace connected to the CAN port. The hot water indicator shows how ready the system is in terms of pre-heating, it is recommended to always start a shower when the system is fully hot.

## System Alerts and Errors

When the furnace detects an issue,  will appear on the screen.



- Some errors will stop the furnace from operating.
- Others serve as warnings, but the system will continue running.
- To find the cause of the alert, retrieve the error codes.

## Retrieving Error Codes

1. Press and hold  and  together for 4 seconds.
2. The controller will display error codes in the format E1 00122.
3. Up to **six** error codes will be displayed in sequence.
4. For a full list of error codes, scan the QR code



## Deleting Error Codes

1. While error codes are displayed, press and hold  and  for 4 seconds.
2. The screen will flash E00000 three times, confirming that the error codes have been deleted.



## No Furnace

If the **No Furnace** indicator appears, it means the thermostat's CAN functions are enabled, but no Eberspacher furnace is detected. This suggests the thermostat is attempting to communicate with the furnace but cannot establish a connection.

## Adjusting Thermostat Parameters

Some thermostat settings can be customized. The default settings are suitable for most situations and typically do not need adjustment.

### How to Change Parameters:

1. Ensure the thermostat is turned off.
2. Press and hold and for 3 seconds to enter Parameter Mode.
3. Use to scroll through available parameters.
4. Adjust settings using and .
5. Changes are saved instantly.
6. Turn the thermostat off to exit Parameter Mode.

CODE	PARAMETERS	RANGE	DEFAULT
1	Temp calibration/offset	-9 ~+9	0
2	Temperature Display	0 Deg C, 1 Deg F	Deg C
3	CAN Communication	0 Disable, 1 Enable	Enable
4	Fan auto mode P-band range	2, 4, 6, 8, 10	10
5	Fan auto mode I-time range	1 - 60 mins	3 mins
6	Min EC Output for Auto Fan	0 - 10 Vdc	0 Vdc
7	Max EC Output of Auto Fan	0 - 10 Vdc	10 Vdc
8	Low Fan Speed for EC fans on manual mode	0 - 10 Vdc	2 Vdc
9	Medium Fan Speed for EC fans on manual	0 - 10 Vdc	5 Vdc
10	High Fan Speed for EC fans on manual mode	0 - 10 Vdc	10 Vdc
11	Not used		
12	Show Hot Water Temperature Graph	0, 1 (show)	1 (show)
13	Show Fuel Level Graph	0, 1 (show)	0 (do not show)
14	Display Graphs When Screen Sleeps	0, 1 (show)	1 (show)
15	HW Temperature Display*	0	Off
16	Batton Backlight	0 Off, 1 On	On

\* If Parameter 15 is set to Off the main temperature display is based on the internal sensor or the external sensor if connected. If set to On the main display is always based on the internal sensor and the temperature sensed by the external probe is displayed in the top right of the controller. This allows the actual hot water temperature to be displayed in solar hot water systems.

**Note:** Parameters 2 and 3 adjust the sensitivity of the fan in Auto mode. P sets the speed at which the fan adjusts as the set temp is approached and T sets the time interval at which the controller adjusts the fan.